

## **TSEM LADRANG**

A *ladrang* is the Lama's household, and the head of the Dharma organisation and centre. As the Lama – who is also the spiritual guide – resides in the *ladrang*, all main spiritual decisions and matters concerning each department of the organisation are discussed and decided here.

Tsem Ladrang is the household of His Eminence Tsem Tulku Rinpoche, Lama and spiritual guide of Kechara House. There is a *ladrang* in Kuala Lumpur, and a *ladrang* in Kathmandu, Nepal to facilitate the growth of Kechara in both locations. They contain His Eminence's personal living quarters, administrative offices for the *ladrang* staff, an audience room for His Eminence to hold meetings and meet students, and a central prayer hall that is dedicated especially towards Kechara House's work and growth.

Ultimately, all funds raised for Tsem Ladrang and all the work done within goes back towards supporting the Dharma work and activities of all the Kechara departments.

Tsem Ladrang and the staff support His Eminence's personal needs. We also plan and support all teachings and Dharma events which His Eminence attends, help to oversee and assist the work of the Kechara departments, and facilitate audiences for students and friends to meet with His Eminence.

### **Contact Us**

*JP Thong*

Tsem Ladrang (Branch)  
No. 8-2, Jalan PJU 1/3D,  
SunwayMas Commercial Centre,  
47301 Petaling Jaya,  
Selangor, MALAYSIA.

[ M ] +6012 207 3503

[ T ] +603 7722 1967

[ F ] +603 7728 5188

[ E ] [jpthong@tsemladrang.com](mailto:jpthong@tsemladrang.com)

[ E ] [mail@tsemladrang.com](mailto:mail@tsemladrang.com)

[ W ] [www.kechara.com/ladrang](http://www.kechara.com/ladrang)



TSEM LADRANG

དགའ་གར་ཕྱུ་ཁང་ཚོམས་ལྷ་བླང་།

## KEY PEOPLE

### Liaisons



*JP Thong*

Director of Operations



*Datuk May Phng*

Executive Director



*Ooi Beng Kooi*

Personal Assistant and  
Director of e-Division



*Chuah Su Ming*

Director of Marketing and  
Public Relations



*Loh Seng Piow*

Personal Attendant

### Assistant to Director of Operations



*Andrew James Boon*

### Personal Attendants



*KB Thapa*



*Monlam*



*Joy Kam*

## **e-Division**



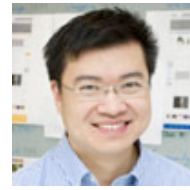
*Shin Tan*



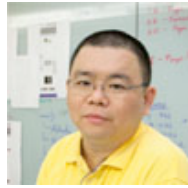
*Khong Jean Ai*



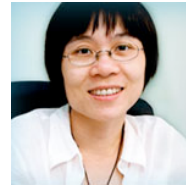
*Wan Wai Meng*



*Lionel Chew*



*Lew Kwan Leng*



*Kok Wah Ying*

## **Marketing and Public Relations**



*James Long*

## **Administration, Finance and Operations**

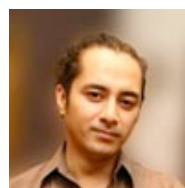


*Bonita Khoo*

## **Household Affairs and Special Projects**



*Wendy Ho*



*Justin Ripley*